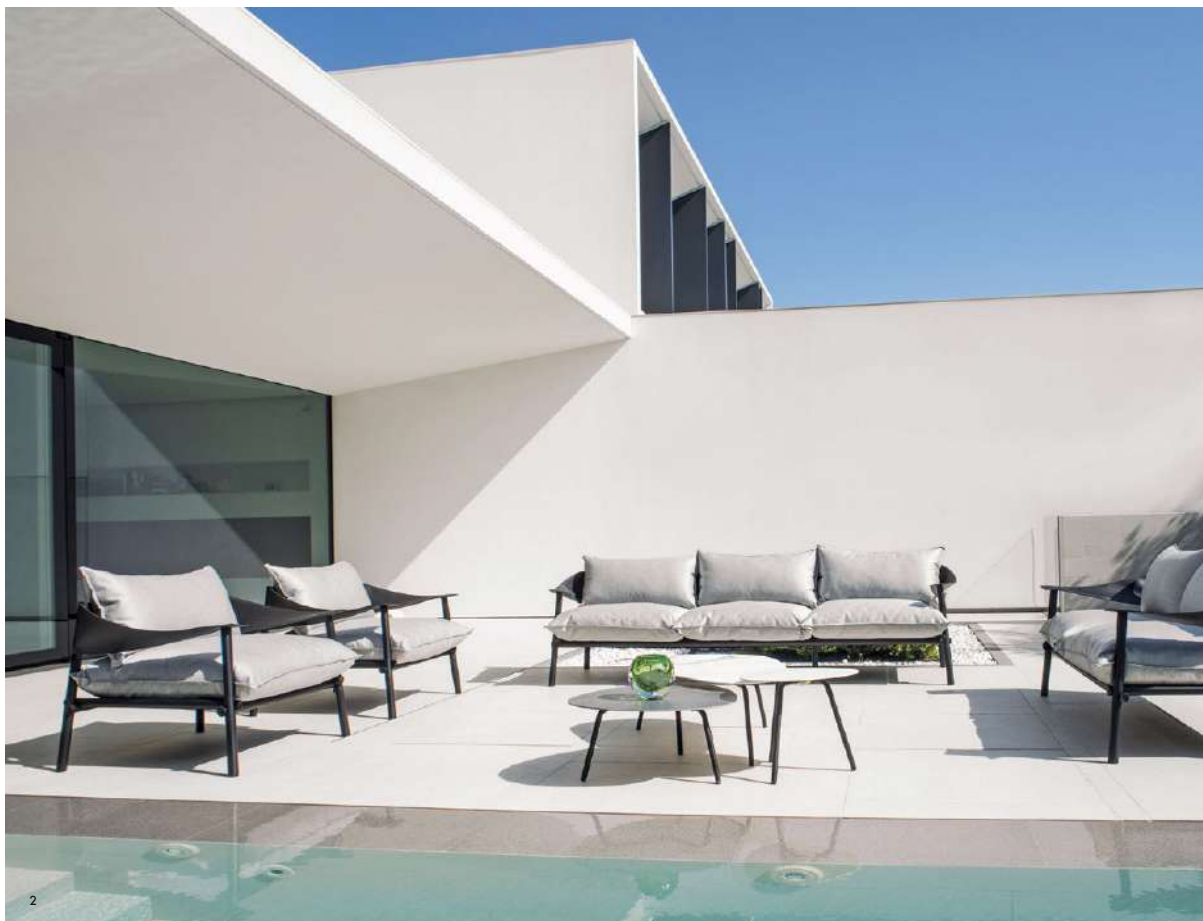


GARTENMÖBEL

1  
Mit ihrer wellenartigen Form macht sich «The Surge» gut als Gartenskulptur, die zudem bequem und funktional ist. Legt man das Kopfteil beispielsweise in die Sitzfläche, entsteht eine gerade Liege. ARIT

2  
Die Linie «Terramare», entworfen vom Studio Chiamonte-Marin, beinhaltet ein Sofa in zwei Grössen sowie einen Sessel. Für die Rücken- und Armlehnen wird ein spezielles, outdoortaugliches Kunstleder verwendet, was dem Möbel Leichtigkeit verleiht. Das Untergestell besteht aus Aluminium. EMU

3  
Das Unternehmen PAOLA LENTI steht vor allem für schöne Materialien, Farben und natürlich für italienisches Design. Diese runde Sitzinsel «Ease», hat einen Durchmesser von 180cm. Die Sitzfläche besteht aus Stoff, die umlaufende Lehne aus einem feinen Kunststoffgeflecht. Die Farbpalette ist breit, was auch für den Pouf «Nido» gilt.





Conocido por la originalidad de su pensamiento, Jasper Morrison es uno de los diseñadores más industriales más prestigiosos de las últimas décadas. Ahora presenta junto a **VITRA** las All Plastic Chair, una colección en polipropileno que a primera vista recuerda a las sencillas y clásicas sillas de madera tan familiares en Europa durante muchas décadas. [www.vitra.com](http://www.vitra.com).

**14**



La característica principal de la colección de sillas XQI es su apariencia perfectamente equilibrada gracias a la perfecta integración del marco de acero inoxidable en la cálida madera de teca. Es de **ROYAL BOTANIA**. [www.royalbotania.com](http://www.royalbotania.com)

**15**



Dock, de **EMU**, es un sistema modular de sofás; los distintos elementos que lo componen pueden ensamblarse con una facilidad increíble, dando vida a múltiples combinaciones con sofás cama sofás y sillones de distintas medidas. Un diseño de Sebastian Herkner. [www.emu.it](http://www.emu.it).

**16**

AGENDA / NEWS



**GARDEN DELIGHT**

The secret to a great piece of outdoor lighting? A look-at-me design you'd happily show off inside your home too. Seeming to defy gravity, with its asymmetrical shape, **LivingEtc** Cone hanging lamp uses a steel structure and polycarbonate lampshade to hold its impressive proportions. Time to start planning our next moodily lit all-fresco soiree. **£980 (chaplins.co.uk)**



**COOL RUNNING**

It would seem marble has more mileage than just covering kitchen worktops. Giving a new lease of life to the classic white trainer, we're smitten with these mineral-effect Clean 90 sneakers from Axel Arigato. Now that's what we call a sturdy base. **£160 (harveynichols.com)**

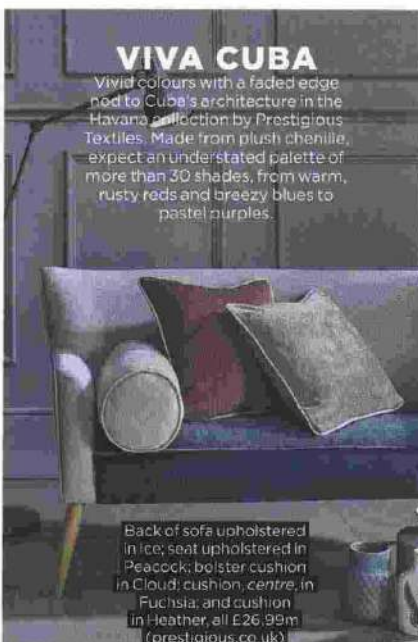
**[ Shape shifter ]**

Compact enough to be a side table, but with a generous-sized top, Kelly Hoppen's Band table for Resource Decor does the choose-any-room trend proud. We love its simple geometric form, made from glossy lacquered fibreglass. **£2,999 (houseology.com)**



**VIVA CUBA**

Vivid colours with a faded edge nod to Cuba's architecture in the Havana collection by Prestigious Textiles. Made from plush chenille, expect an understated palette of more than 30 shades, from warm, rusty reds and breezy blues to pastel purples.



Back of sofa upholstered in Ice; seat upholstered in Peacock; bolster cushion in Cloud; cushion, centre, in Fuchsia; and cushion in Heather, all **£26,99m (prestigious.co.uk)**



**HEAVY METAL**

Harder to misplace than its life-size counterparts, West Elm's oversized Bobby and Safety Pin paperweights are just the thing to jazz up a desk. They'll be equally striking as *objets* on your coffee table too. **£24 each (westelm.co.uk)**

CLOCKWISE FROM RIGHT Aristotle Greek Key 977-33661 viscose in Granite, above, and Navy, below, **£64m each (samuelandsons.com)**; Mykonos catch-all, **£58 (uk.jonathanadler.com)**; Le Monde Beryl Mola sasa slippers, **£305 (matchefashion.com)**; Mattoni cushion, **£55 (habitat.co.uk)**; and Caesar's Palace plate, **£14.95 (dwell.co.uk)**

**TRENDING**

**[ Greek is the word ]**

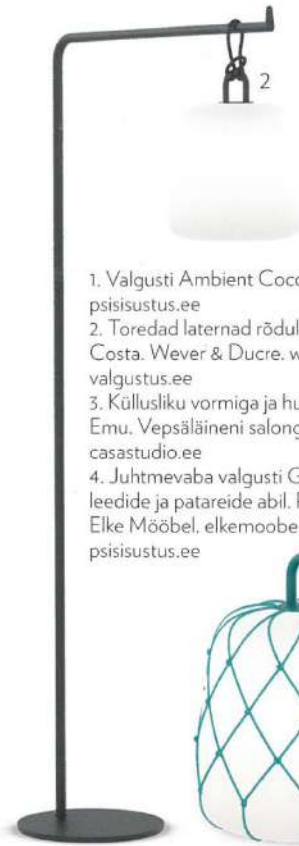
Ancient Greece blessed us with Aristotle, Plato and open-toed sandals. Yet it's the key motif the design crowd can't seem to get enough of. Updated here with a punchy palette, this is far from a Greek tragedy.

fookus



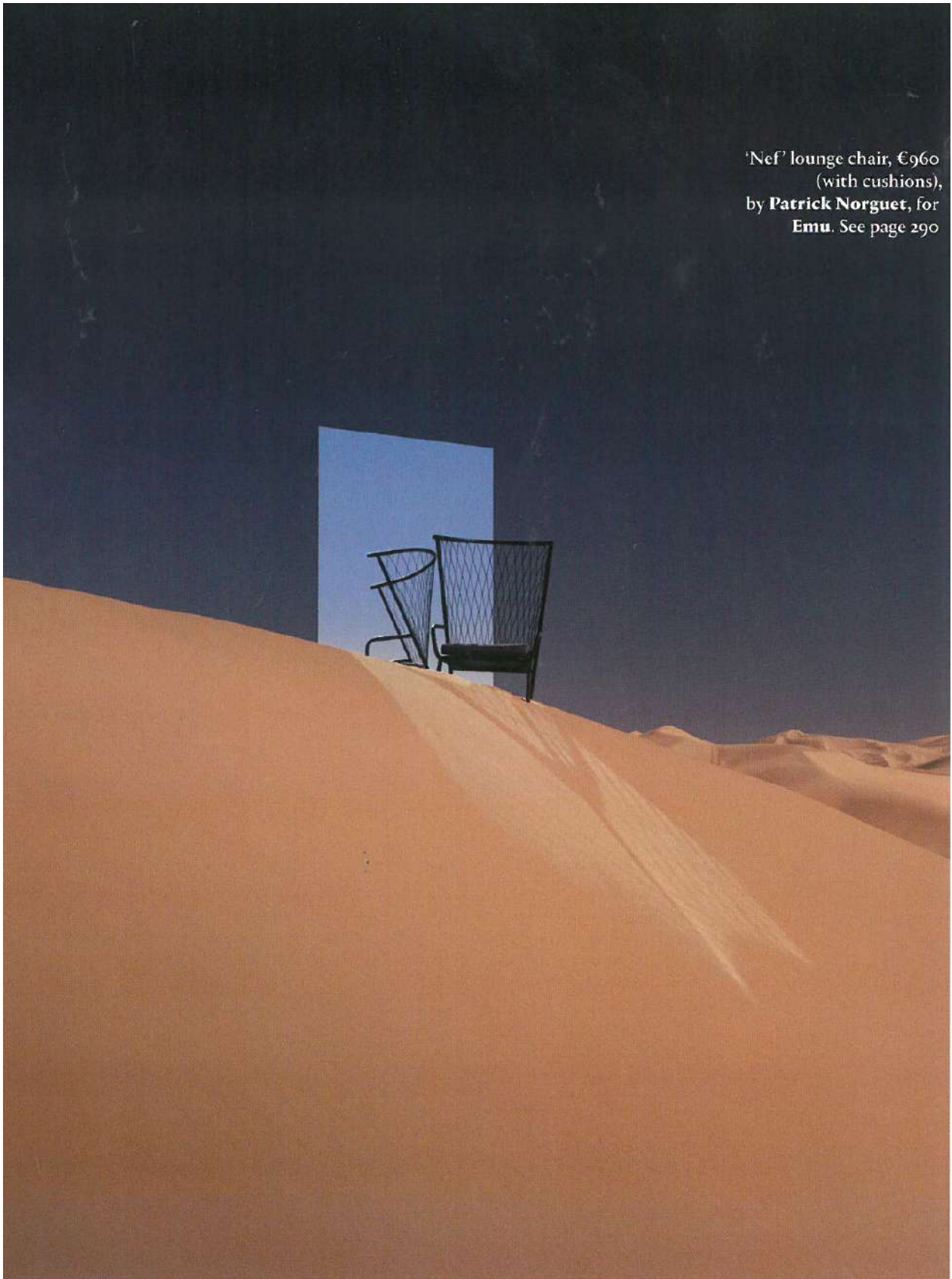
Kerge kanapee Daydream on mõeldud mõnusaks puhkehetkeks värskes õhus. Living Divani. [livingdivani.com](http://livingdivani.com). Salong Dekoor. [dekoor.ee](http://dekoor.ee)

fookus



1. Valgusti Ambient Cocoon, Gloster, gloster.com, PSI Sisustus, psisisustus.ee
2. Toredad laternad rõdule, aeda või terrassile. Õuevalgusti Costa, Wever & Ducre, weverducre.com. Moodne Valgustus, valgustus.ee
3. Küllusliku vormiga ja hubast valgust kumav aiavalgusti Cone, Emu, Vepsäläineni salong, vepsalainen.com. Casa Studio, casastudio.ee
4. Juhtmevaba valgusti Giravolta näitab valgust leedide ja patareide abil, Pedrali, pedrali.it, Elke Mööbel, elkemoobel.ee, PSI Sisustus, psisisustus.ee





'Nef' lounge chair, €960  
(with cushions),  
by **Patrick Norguet**, for  
**Emu**. See page 290